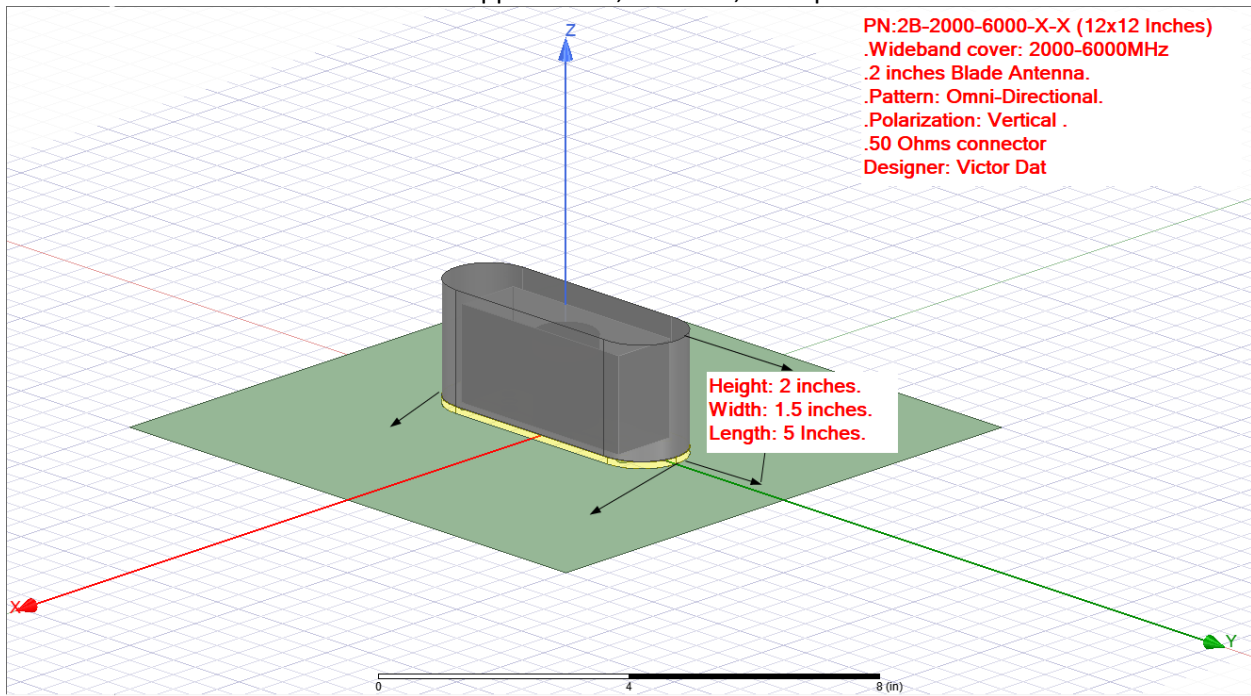


## 2B-2000-6000-XS-X

Wideband Blade Antenna.

Airborne Applications ,Data Link, Transponder



### Electrical:

Frequency:2,000-6,000 MHz

Radiation Pattern: Omnidirectional

Polarization: Vertical

VSWR: 2.0:1

Output impedance: 50 Ohms

### Mechanical:

Size: Width: 1.5 inch, Length: 5 inch, Height: 2 Inch.

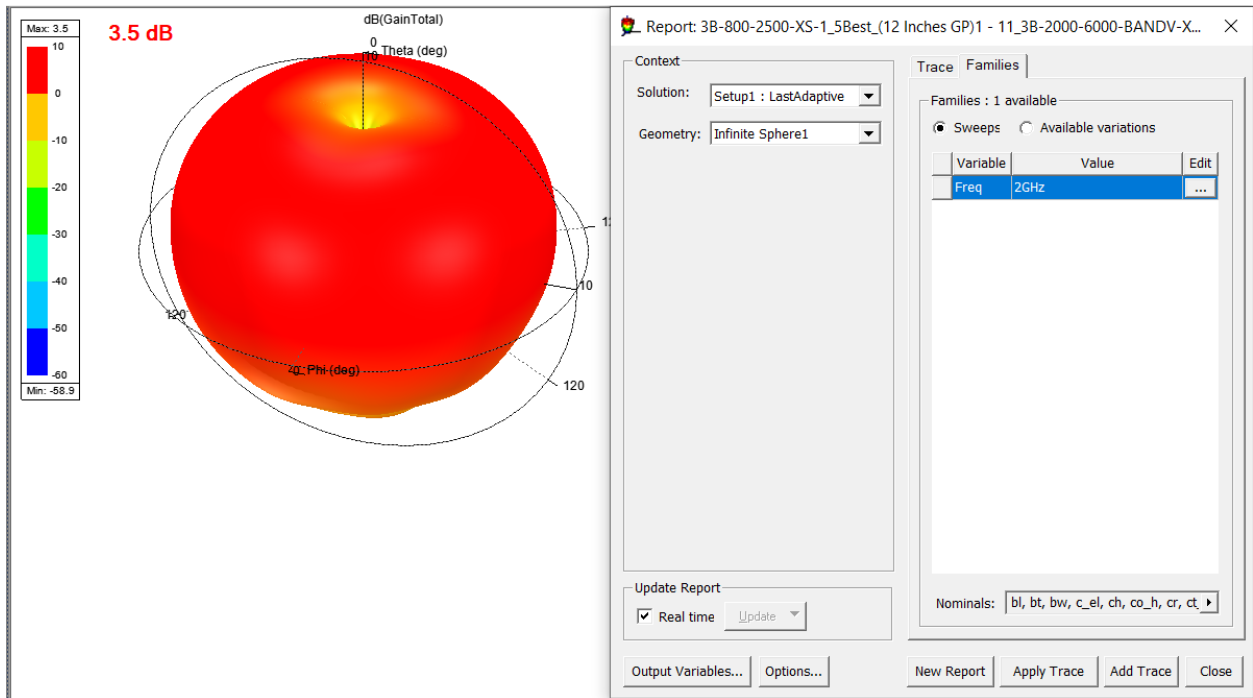
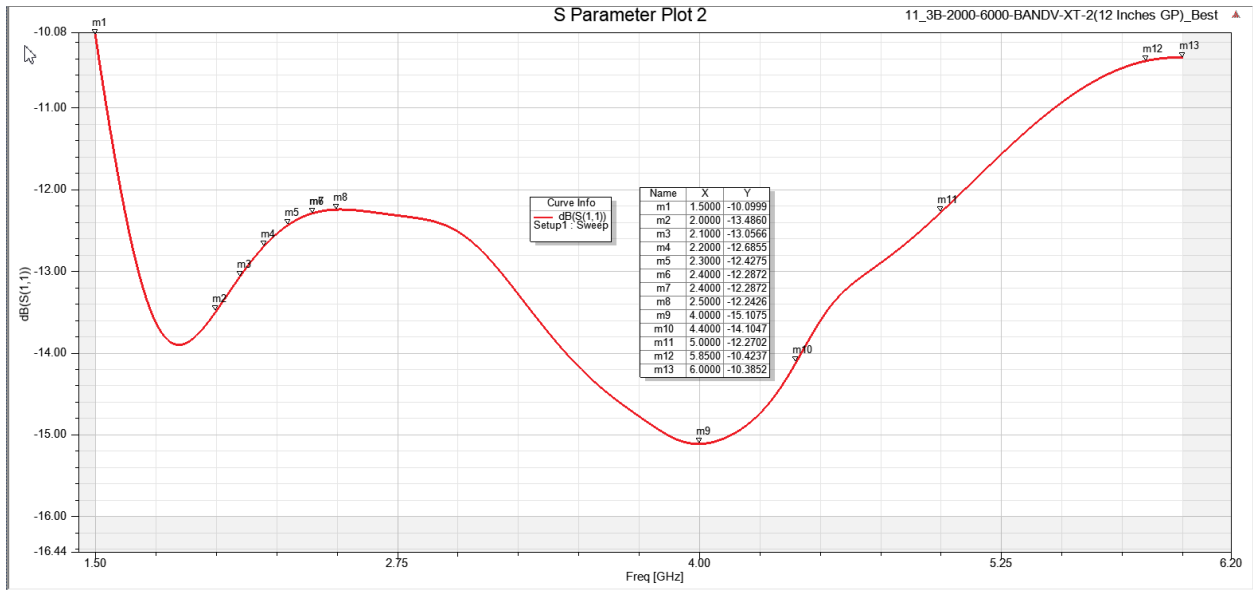
Base plate: Aluminum Alloy 6061

Radome: Ultum 1000 (Drawing For Simulation version)

Element: Monopole

Ground plane: 12x 12 inches.

Designed: Victor Dat Do



Report: 3B-800-2500-XS-1\_5Best\_(12 Inches GP)1 - 11\_3B-2000-6000-BANDV-X...

Context  
 Solution: Setup1 : LastAdaptive  
 Geometry: Infinite Sphere1

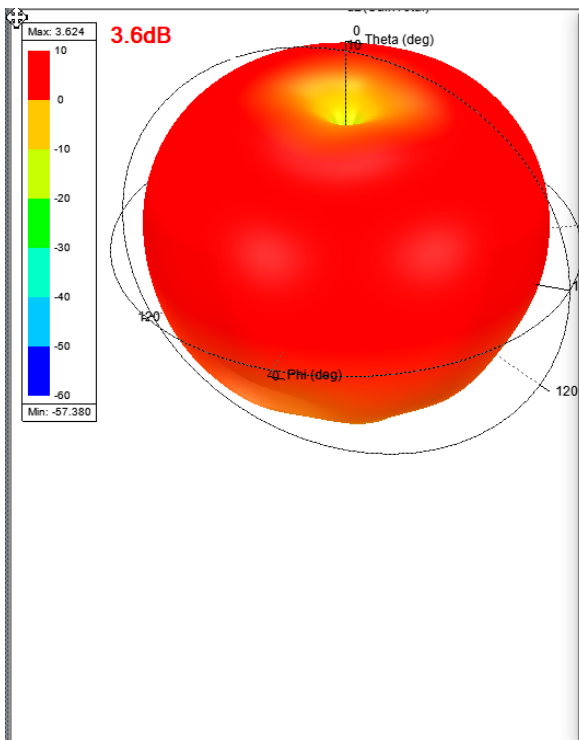
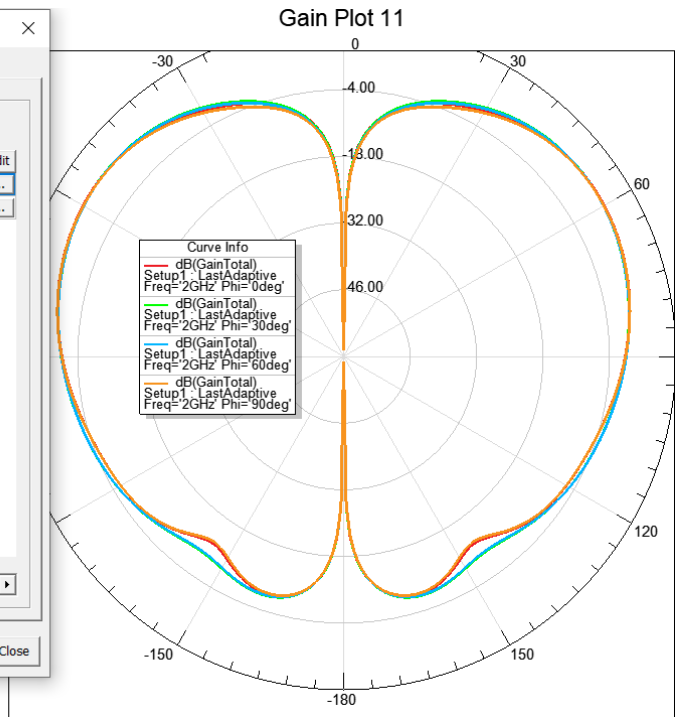
Trace Families Families Display  
 Families : 4 available  
 Sweeps  Available variations

Variable	Value	Edit
Phi	0deg, 30deg, 60deg, 90deg	...
Freq	2GHz	...

Nominals: bl, bt, bw, c\_el, ch, co\_h, cr, ct

Update Report  
 Real time

Output Variables... Options...



Report: 3B-800-2500-XS-1\_5Best\_(12 Inches GP)1 - 11\_3B-2000-6000-BANDV-X...

Context  
 Solution: Setup1 : LastAdaptive  
 Geometry: Infinite Sphere1

Trace Families Families Display  
 Families : 1 available  
 Sweeps  Available variations

Variable	Value	Edit
Freq	2.1GHz	...

Nominals: bl, bt, bw, c\_el, ch, co\_h, cr, ct

Update Report  
 Real time

Output Variables... Options...



Context

Solution: Setup1 : LastAdaptive

Geometry: Infinite Sphere1

Update Report

Real time

Output Variables... Options...

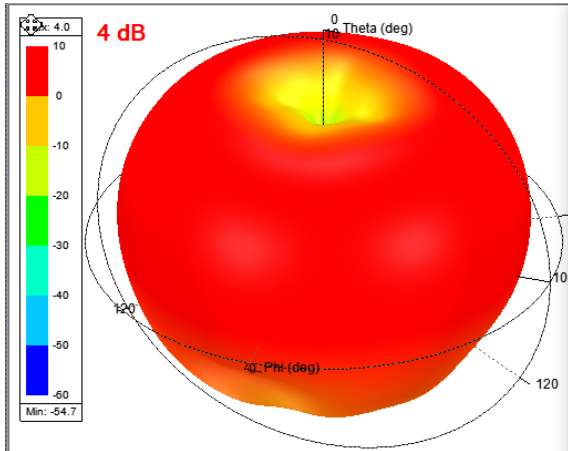
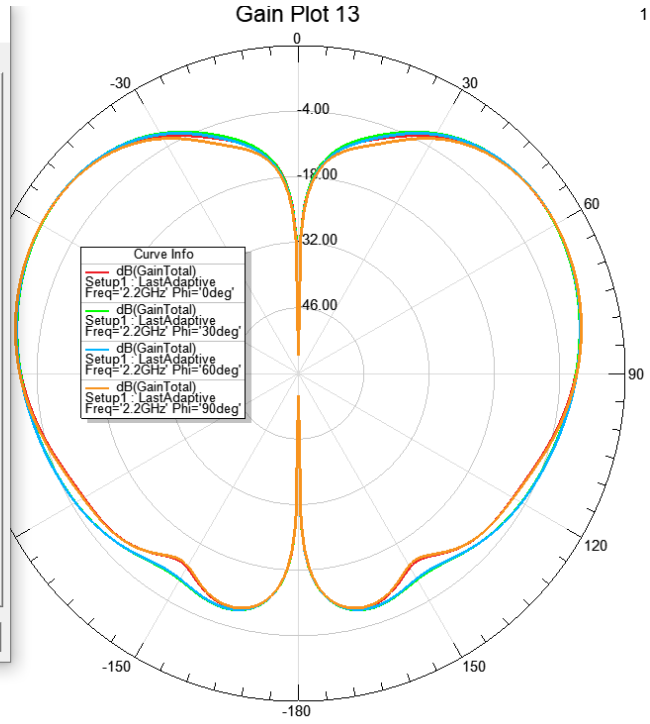
Trace Families Families Display

Families : 4 available

Sweeps  Available variations

Variable	Value	Edit
Phi	0deg, 30deg, 60deg, 90deg	...
Freq	2.2GHz	...

Nominals: | bl, bt, bw, c\_el, ch, co\_h, cr, ct |



Context

Solution: Setup1 : LastAdaptive

Geometry: Infinite Sphere1

Update Report

Real time

Output Variables... Options...

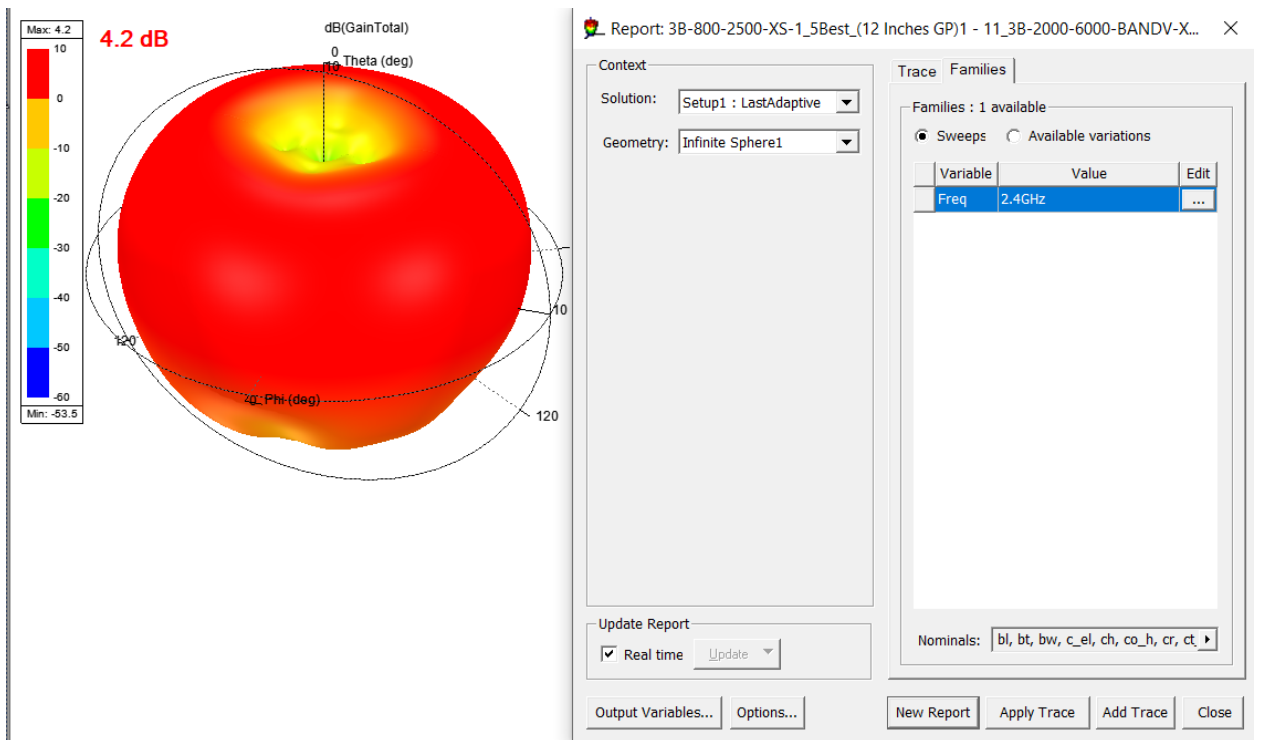
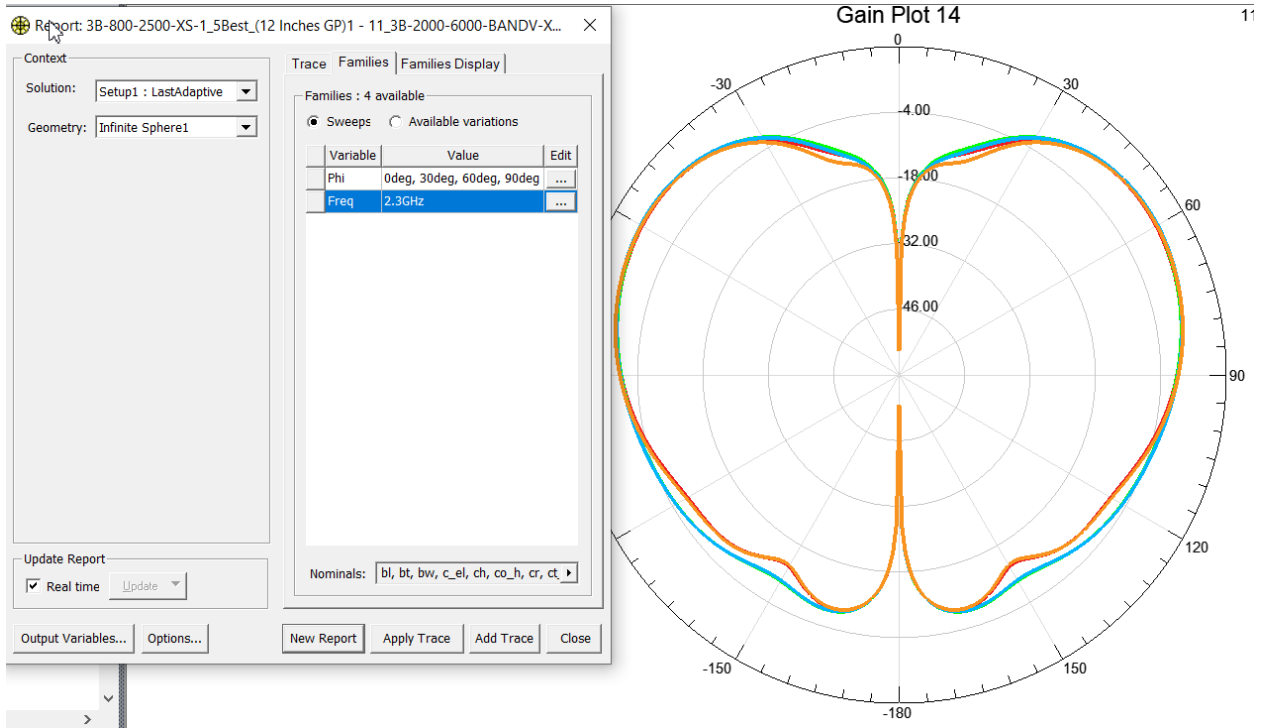
Trace Families

Families : 1 available

Sweeps  Available variations

Variable	Value	Edit
Freq	2.3GHz	...

Nominals: | bl, bt, bw, c\_el, ch, co\_h, cr, ct |



Report: 3B-800-2500-XS-1\_5Best\_(12 Inches GP)1 - 11\_3B-2000-6000-BANDV-X...

Context

Solution: Setup1 : LastAdaptive

Geometry: Infinite Sphere1

Update Report

Real time

Trace Families Families Display

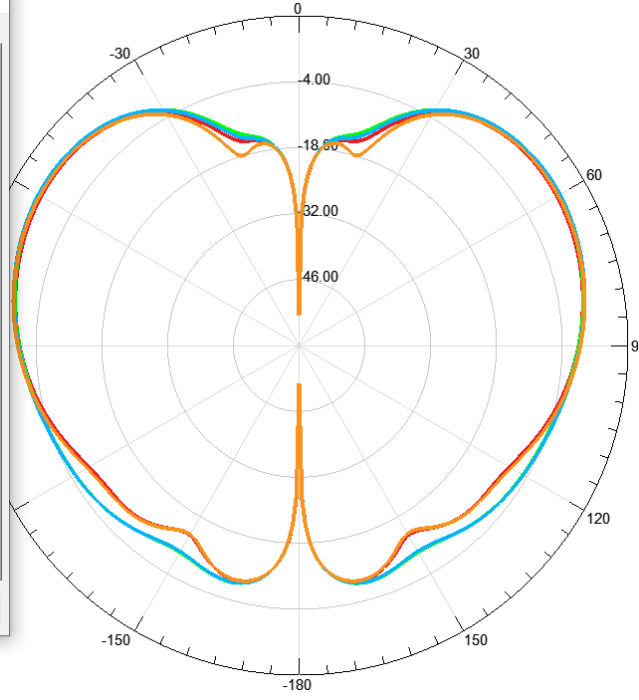
Families : 4 available

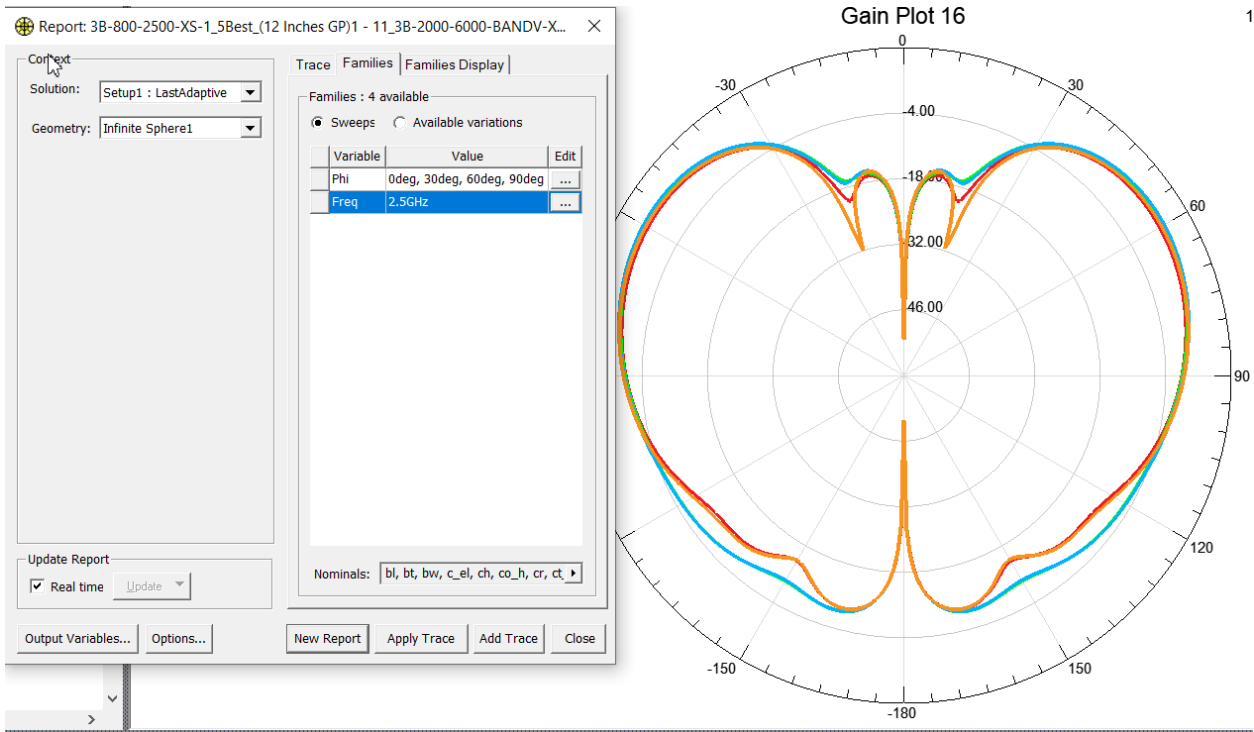
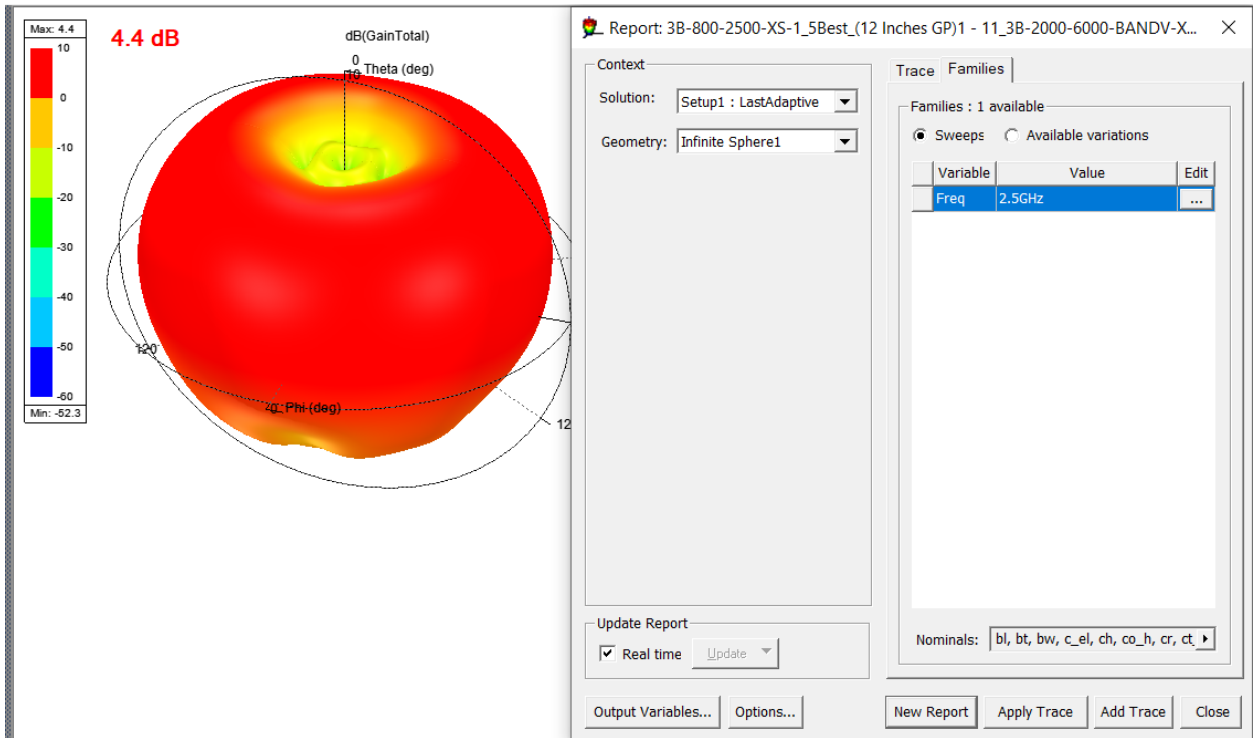
Sweeps  Available variations

Variable	Value	Edit
Phi	0deg, 30deg, 60deg, 90deg	...
Freq	2.4GHz	...

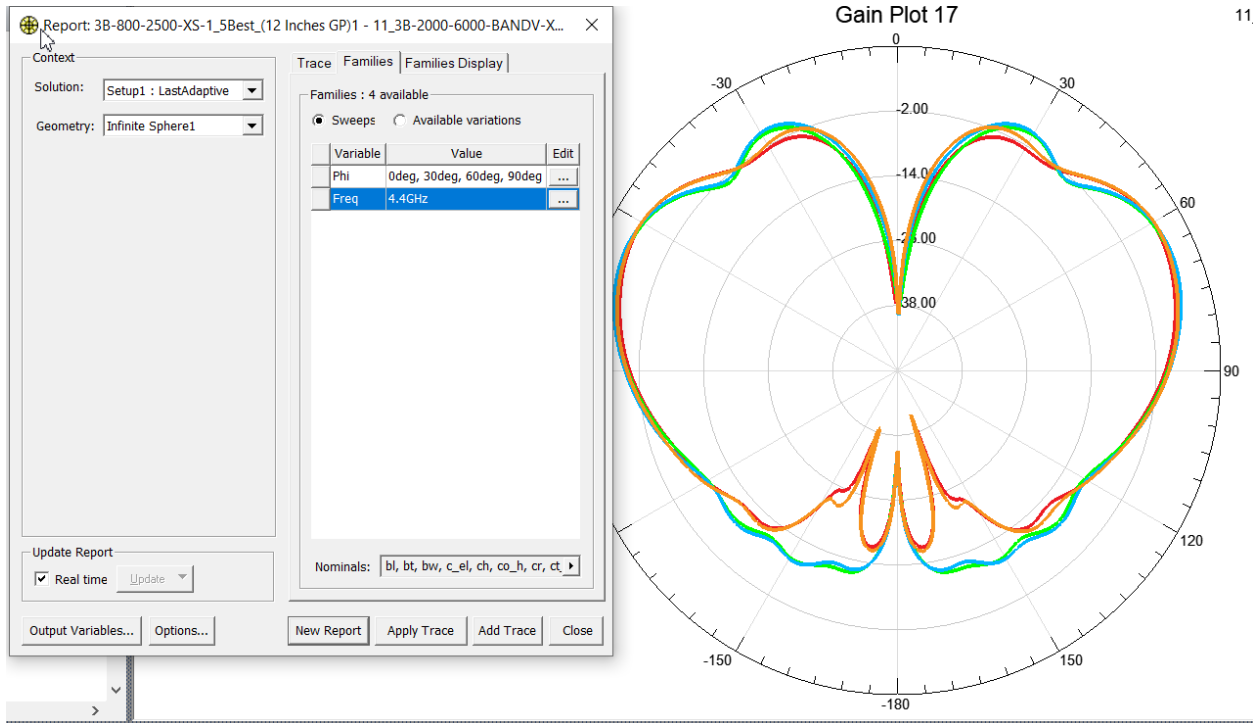
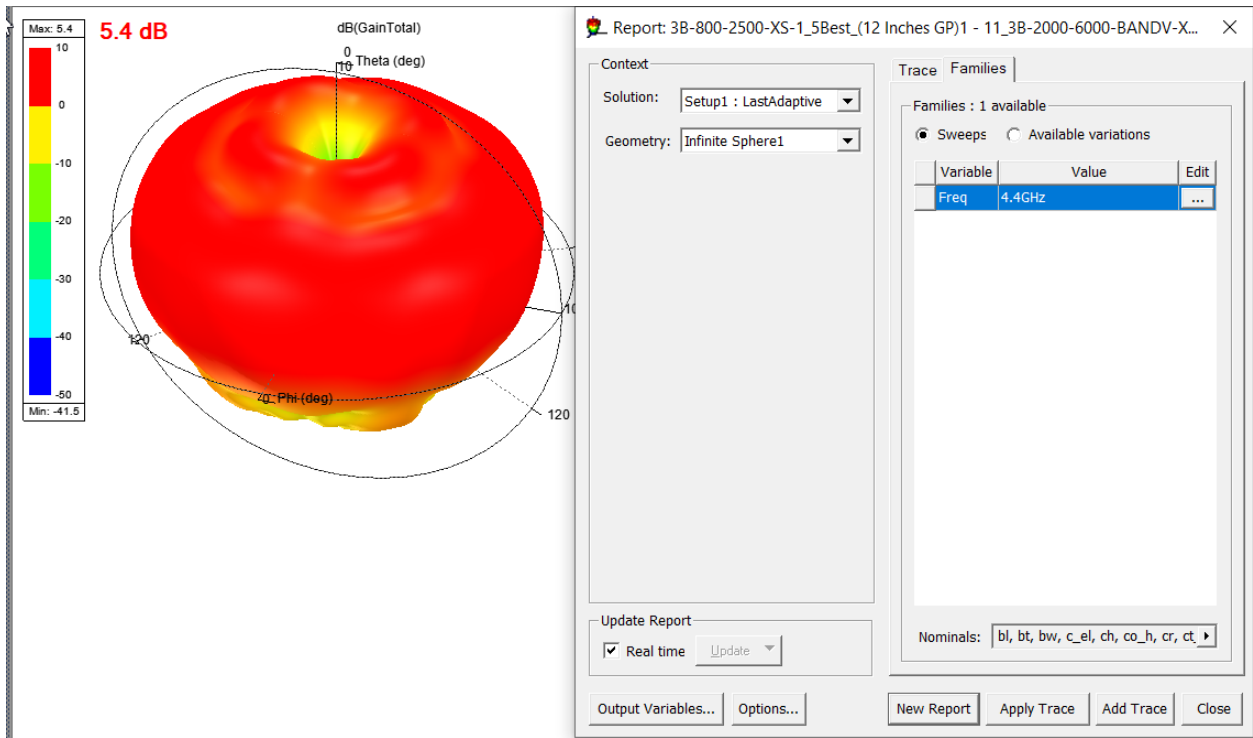
Nominals: |b|, bt, bw, c\_el, ch, co\_h, cr, ct

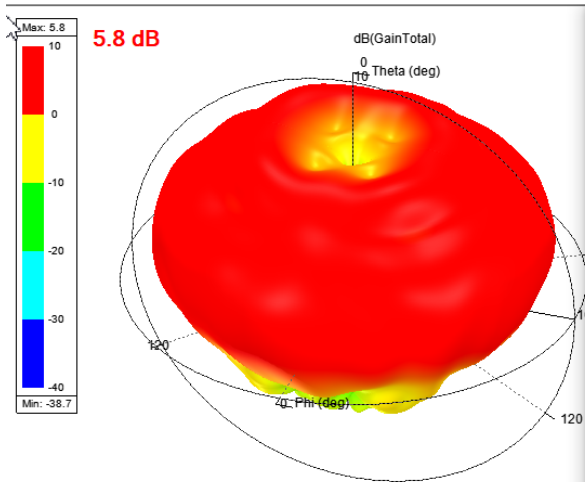
Gain Plot 15











Report: 3B-800-2500-XS-1\_5Best\_(12 Inches GP)1 - 11\_3B-2000-6000-BANDV-X...

Context  
Solution: Setup1 : LastAdaptive  
Geometry: Infinite Sphere1

Trace Families  
Families : 1 available  
Sweeps Available variations

Variable	Value	Edit
Freq	5.2GHz	...

Nominals: bl, bt, bw, c\_el, ch, co\_h, cr, ct

Update Report  
 Real time Update

Output Variables... Options... New Report Apply Trace Add Trace Close

Report: 3B-800-2500-XS-1\_5Best\_(12 Inches GP)1 - 11\_3B-2000-6000-BANDV-X...

Context  
Solution: Setup1 : LastAdaptive  
Geometry: Infinite Sphere1

Trace Families Families Display  
Families : 4 available  
Sweeps Available variations

Variable	Value	Edit
Phi	0deg, 30deg, 60deg, 90deg	...
Freq	5.2GHz	...

Nominals: bl, bt, bw, c\_el, ch, co\_h, cr, ct

Update Report  
 Real time Update

Output Variables... Options... New Report Apply Trace Add Trace Close

